



The Rockhounder

July-August 2018

The purpose of the Gem, Lapidary, and Mineral Society of Montgomery County MD, Inc. is “to increase knowledge and popular interest in earth sciences, geology, mineralogy, paleontology, lapidary arts, and related subjects.”

NOTE: Please send any submissions for the September issue of The Rockhounder to Editor Olivia Luzier at editor@glmsmc.com By Sunday, September 23, 2018.

Regular Meeting Announcements

Steven Calamuci, Vice President

September Speaker Information:

Speaker: Casper Voogt

Title of Talk: “Namibia”

Our presenter for the September 10th Regular Meeting will be Casper Voogt. His presentation will cover what it's like to visit Namibia. He will discuss not just minerals, but also the countryside, wildlife, and people. Highlights from the talk will include visiting Tsumeb and buying aquamarine from local miners.

Follow us on Facebook at

<https://www.facebook.com/groups/984241208329511/>

Next Regular Meeting:

Date:
Monday,
Sept. 10, 2018

Time:
7:30 PM

Place:
Rockville Senior
Center,
1150 Carnation
Drive
Rockville, MD

Next Board of Directors Meeting:

The Board of Directors will meet **7:30 PM on Monday, Sept. 17, 2018** at the home of

Jonathan Harris. Board members are expected to be there. Any member is welcome to attend, but please let Jonathan know if you plan to attend.

Inside this issue:

Item	Page
Meeting Announcements, Speaker Info	1
President's Message	2
Regular Meeting Minutes	3
BOD Minutes, FRA Minutes	4
FRA Badges Pictures	5
Show Table for Regular Meeting	6
Field Trip News, HK Penn-MD Write-up	7
Pictures of Recent Field Trip Finds	9
Pictures from Recent Field Trips	13
Field Trip Report	15
Shop and Show News	16
Articles of Interest	17
Membership Payments for 2018-2019	18
Upcoming Shows	19



President's Message

Ken Reynolds

Hello Rockhounds,

I hope everyone is having a nice summer break! Has anyone been out collecting rocks or fossils or working on any lapidary projects? We would love to hear reports or see what you have found!

We have a couple of ways through our club in which you can share the things you love. One is by writing an article about your passion and submitting it to our Rockhounder newsletter. The other way is to bring an item or two to our show and tell portion of our monthly meetings. It is a great place to show off what you have found or what you have been making or working on. It has always been one of my favorite parts of the meetings and what a fun way to share with the group your passions and interests!

As most of you may know, one of my passions is my love of the minerals from the Franklin/Sterling Hill mines in New Jersey. I typically go once a month to collect minerals and to see friends. On my most recent trip in July, I went digging with friends and found a small four color fluorescent mineral and will be surely bringing it to show and tell in September.

Please be sure to come to our meeting and bring something to share with the group in our show and tell.

Thank you and hope to see you there!!

Ken Reynolds
President



GLMSMC Regular Meeting Minutes for June 11, 2018

Karen Lottes

Meeting was called to order by President Ken Reynolds.

Mark gave badges for the Future Rockhounds. The Collecting Badge, which stresses curating your collection, went to Luke, Calley, Nicole, Colin, and Isabella. Colin and Isabella also earned the Earth Process Badge, which looks at igneous, sedimentary, and metamorphic rocks. Since that meant that they had each also earned their sixth badge, it means they are officially Rockhounds and received certificates along with a bunch of goodies. **Mark also noted that our club has more Future Rockhounds than any other club on the East Coast!**

Ken made announcements:

- There is a show coming up this weekend in Quarryville, PA.
- Since Andy is stepping down as chair of the Lapidary Shop, the Lapidary Shop now has its own committee because it is taking six of us to replace him. There will be a meeting for anyone interested in working on that part of our annual show on Saturday, July 7. Please let him know.

Holly made a correction to the minutes: Patrick Haynes is not a new member. Joel also noted that the minutes didn't mention that there won't be a Board meeting in June.

Motion to pass the minutes as amended. Motion passed.

Dave F. has two field trips coming up in July:

- July 7th at Mt. Pleasant Mills Middleburg Quarry, with a 10 am start time
- July 14th at Peachbottom Quarry, a serpentine quarry, with an 8:00 am start time.

There were two new members, **Matthew Keener**, who is new to the hobby, and Chris Hanson. Chris has an old Indian cemetery behind his house. We also had a visitor, Matthew Keener, a geology grad who is coming back to the hobby.

Move to accept new members. New members accepted.

We had a lively presentation with Jeff Nagy, who created a Geology Jeopardy game. The categories were "Be Gneiss," "Rock or Mineral," "Maryland Mines," "Metamorphic or Igneous," and "GLMSMC Officers."

The presentation was followed by an auction of donated material.



GLMSMC BOD Meeting Minutes

There was no Board meeting for the month of June.

Future Rockhounds of America (The MOCKS) Ages 10-15

Mark Dahlman

Next Meeting Date: September 10th

Meeting Time: 7:45-9:00pm

Meeting Location: Sunroom Cafeteria at the Rockville Senior Center

June 11th Meeting:

Congratulations to our two latest Rockhounds, Isabella and Colin, who were awarded their badges at the June meeting. We also congratulated Isabella, Colin, Luke, Nicole, and Kaylee for earning their collecting badges, and Isabella for earning her Earth Processes badge too. What a busy group! As part of the Earth Resources activities everyone brought examples of everyday objects and the minerals that go into making them. The FRA members made beautiful posters of minerals and their uses too. These activities were the last ones needed for them to earn their Earth Resources badges – way to go! We'll award the badges at our September meeting.

August 10th field trip: The FRA will be taking a trip to the Natural History Museum in D.C. Contact Mr. Dahlman for details.

September 10th Meeting:

We'll be starting the World In Miniature badge in September. It's all about the fascinating specimens that are two inches or less. We have a wonderful supply of such specimens provided to us by our friend out west, Pat Haynes. FRA members should please bring their loupes! We'll also have our door prize drawings as usual. It should be a good meeting - see you there!

For more information on the Future Rockhounds of America program, please contact Mark Dahlman at <fra_advisor@glmsmc.com> or 301-428-0455.



Pictures of Badges Awarded to FRA Members



FRA members receiving badges at the June 11th meeting

Photos courtesy of Nancy Mueller



Show Table for June 11th Regular Meeting

** denotes self-collected

NAME	SPECIMEN	LOCALITY
Jeff Cessna	Hardystonite Clinohedrite Tugtupite, Polyolithionite	Franklin, NJ Kangerlussaq Ilimaussaq Complex, Nasaq, Greenland
Gary Leaman	Chalcedony	Gila County, AZ
Diane Leaman	Smithsonite	Sinoloa, Mexico
Frances Becker	1875 mine record	Etchison, MD
Holly for Patrick Haynes	Fluorite, Galena, Baryte	Royal Flush Mine, Bingham, NM
Doug Baum	Hematite and Quartz	Cumberland, England
Ken Reynolds	Margarosonite, Esperite	Franklin, NJ
Reed Owens	Wernerite	Canada
Marcia Baum	Amethyst (?)	Store bought
Pat Repik-Byrne	Chalcopyrite on Dolomite	Brushy Creek Mine, Reynolds County, MO
Don Greaves	Suspected Petrified Wood Astrophyllite	Prince George's County, MD Russia
Amanda Parker	Quartz	Scufflin Acres, VA
King Stablein	Cinnabar	Nevada
Dave Fryauff	**Pyroaurite, etc.	Penn-MD Quarry, Peachbottom, PA
Pam Ogasawara	Thunder Eggs	Oregon
George Durland	Calcite Calcite Calcite	Medford Quarry, Westminster, MD Hunting Hill Quarry, Gaithersburg, MD New Windsor, MD
Barb Burr	Berlin Rock (concretion)	Germany
Joel Rosen	Calcite	Red Mountain District, Ouray, CO
Chuck Mason	Montana Agate	Yellowstone River, MT
Steve Hatleburg	Native Copper	S&G Mine, Cascade, MD
Steven Calamuci	McGuinnessite	HK Penn-MD Quarry, PA
Nancy Shinowara	Book on Mineral Collecting in Northeast America	Mineralogical Record Supplies, 2016
Germaine	Fossil finds	NW, PA

Continued on page 7



Show Table for June 11th Regular Meeting (Cont'd)

General Door Prize: Chinese Painting Stone from Guilin, Guangui Province, China

Won by Barbara Burr

Show Table Door Prize: Aragonite from Zarouta, Selfrou, Morocco

Won by Ken Reynolds

Field Trip News

Dave Fryauff

Upcoming Trips:

- **September 29:** *I am informed that this year's one-day-only rockhounding event at Willis Mountain Kyanite Mine at Sprouses Corner, Buckingham Co., VA, will be held on Saturday, September 29th.*
 - **September 29:** *The once-yearly Willis Mountain Kyanite Mine Rockhounder's Day. This requires early signup through forms that you can get from Dave Fryauff.*
 - **September 29-30:** *The weekend of Sept 29-30 also marks the Franklin, NJ, Fall Show and the Fall Garage Sale at Sterling Hill.*
 - **September 29-30:** *Fall Garage Sale at Sterling Hill Mining Museum (Ogdensburg, NJ)*
-

Haines-Kibblehouse Penn-MD Materials Quarry

Dave Fryauff

I thought it might be nice to recognize Mr. James Lang of the Haines-Kibblehouse (HK) Penn-MD Materials Quarry for his kindness in allowing our club, and others (Southern MD, Delaware, Northern VA, Shenandoah, and Lynchburg) to come into their quarry at the Peachbottom, PA, serpentinite quarry on two recent occasions this summer.

The HK Penn-MD quarry sits just over the state line that separates Cecil Co., MD, from Lancaster Co., PA, in an area that is called the State Line Chrome District. Mindat lists 30 mines or quarries in this area

Continued on page 8



Haines-Kibblehouse Penn-MD Materials Quarry

Continued from page 7

with 17 on the Maryland side and 13 on the Pennsylvania side. One of the most famous of these is the Line Pit, also known as Lowe's Mine, which straddles the state's line with workings in both MD and PA. Mindat lists 20 valid mineral species for this site, but it closed operations in 1919 and is now quite overgrown.

Wood's Chrome Mine, which is now closed to collectors, is only about 2.5 km to the east of the HK Penn-MD quarry in Little Britain Township, PA. It is one of the most famous sites for mineral collecting in the State Line Chrome District. Mindat lists 27 mineral species for Wood's Chrome Mine site and collectors have posted 135 photos of minerals found there, the majority of which are brucite (40), antigorite (13), and zaratite (7). Interestingly, analysis of the 'zaratite' from Lancaster Co., PA, has proven it to be gaspeite, a nickel carbonate mineral in the calcite group that forms a series with magnesite, which is one of the most common minerals found in serpentinite rocks. Two other nickel minerals, millerite and maucherite, are listed from the Wood's Chrome Mine.

The Cedar Hill Quarry, which sits 100 yards directly north of the HK Penn-MD Peachbottom Quarry is also recently off-limits to collectors but has been a favorite site for serpentinite rockhounding and 31 different mineral species are recorded. The majority of mineral photos submitted to Mindat for the Cedar Hill Quarry.

Mindat currently lists only 14 valid mineral species for the HK Penn-MD quarry, including the relatively rare hydroxylated copper carbonates, mcguinnessite and nakaurite. To my knowledge, none of us have found either of these two mineral species during our June and July 2018 field trips. A very bright green botryoidal mineral that was found by several people during both outings was flame tested for the presence of copper (Jonathan Harris personal communication) and failed to give the tell-tale green flame that comparable-sized samples of malachite and brochantite both produced. It seems likely that the green color of this unknown botryoidal mineral was due to nickel or chrome in its composition. This, and a lighter green form of botryoidal magnesite that was found may turn out to be specimens of the nickel carbonate, gaspeite. Micromineral collectors were rewarded with interesting specimens of magnesite and hydromagnesite, but the real surprise for some of us was the occurrence of tiny bronze flakes of coalingite and large fields of hexagonal pyroaurite crystals. See the photos on page 9 for a closer look.

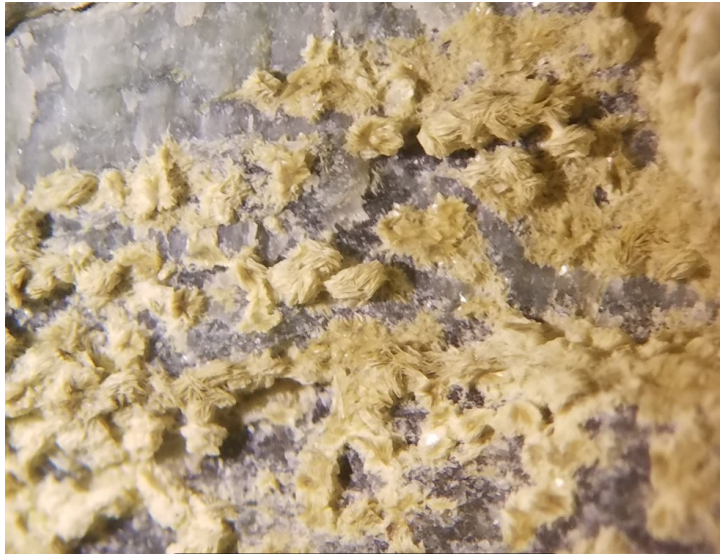
Cheers,
Dave Fryauff

Pictures of Finds from Recent Field Trips

Photos courtesy of Dave Fryauff



Clinocllore from HK Peachtree, PA



Pyroaurite Rosettes



Green Magnesite



Magnesite xls

Continued on page 10

Pictures of Finds from Recent Field Trips

Continued from page 9

Photos courtesy of Sam Linton



Calcite from Middleburg Quarry,
July 2018



Calcite from Middleburg and
Mount Pleasant Mills



Calcite from Mount Pleasant Mills



Deweylite from Penn-MD

Continued on page 11



Pictures of Finds from Recent Field Trips

Continued from page 10



Vermiculite from Penn-MD,
Photo courtesy of Sam Linton



Close-up of Pyroaurite from HK
Peachbottom,
Photo courtesy of Dave Fryauff

*More photos of mineral specimens collected in June & July 2018 at the
Haines-Kibblehouse Peachbottom, PA quarry in the State Line Chrome
District of Lancaster Co., PA*

Continued on page 12



Pictures of Finds from Recent Field Trips

Continued from page 11

More photos of mineral specimens collected in June and July 2018 at the Haines-Kibblehouse Peachbottom, PA quarry in the State Line Chrome District of Lancaster Co., PA



Green magnesite from HK Peachtree

Jonathan Harris'
LW FL
magnesite



Photos courtesy of Dave Fryauff



Pictures from Recent Field Trips

Photos courtesy of Dave Fryauff



June and July 2018 at the Haines-Kibblehouse Peachbottom, PA quarry
in the State Line Chrome District of Lancaster Co., PA



Continued on page 14



Pictures from Recent Field Trips

Continued from page 13

Photos courtesy of Nancy Mueller



Pictures from the July 7th field trip to National Limestone Quarry



Vulcan Garrisonville Quarry Field Trip Report—June 17, 2017

Dave Fryauff

We had a big turnout (29 people!!!) on Saturday with rockhounds from Delaware; Northern Virginia; Shenandoah, Virginia; Southern Maryland; and DC joining us at the Vulcan Materials Quarry in Garrisonville, Stafford Co., Virginia.

Last year, we found some beautiful stilbite xls, but this time, we found few stilbites. However, laumontite, another zeolite, was in good supply and I think everyone brought home good specimens for their collections. Judging by the bright white color of the laumontite that I found, it is starting to dehydrate and unless steps are taken, these nice sharp crystals will turn into powder.

Advice from our esteemed friend, Fred Parker, past GLMSMC member and noted mineralogist, the way to preserve laumontite is to soak it for a couple of hours in a solution of 10% Elmer's white school glue made up in water (1 part white glue in 9 parts of water). Take your rocks out of the glue-water, allow the excess to drain off the laumontite xls, and let it air dry. The glue in the water should help to seal the laumontite against further drying and decomposition. This is a cheap and easy fix for some very nice specimens.

I have never found laumontite xls this large before. Most of my specimens from Saturday are a combination with laumontite growing over a bed of sharp, rhombohedral calcite xls.

Sincere thanks to Sam Linton, who did the contact work to get us into the Vulcan Garrisonville quarry.

If you think my laumontite "keeper" is big... you should see the one Sam found!!!

Cheers,
Dave Fryauff
GLMSMC Field Trip Chairman



Shop and Show News

Lapidary Shop Committee

After 3 years as Lapidary Shop Manager at our annual show and many more as a volunteer, Andy Celmer has made the understandable decision to retire. So invaluable was he that it is taking a committee to do what he has done.

On Saturday, June 7th, some of our club members met and went over how we should continue running the shop. Interested members who were also able to attend were Reed Owens, Karen Lottes, Chris Luzier, Gary Leaman and Diane Leaman. If there are any other club members who wish to attend future meetings, please let us know (you can always email bod@glmsmc.com to tell us).

The long, but highly productive meeting created a new framework for the shop. Building on the work of club members over the years, a mission statement and goals for the shop were proposed.

They are:

Mission: Introduce and excite visitors to the art of lapidary

Goals:

1. Provide a good experience for the participants
2. Create a potential pool of new club members and future Rockhousers
3. Be more engaged with the participants
4. Provide added value to the show
5. Provide an easier and more friendly way of registering
6. Have 4 to 6 cabbing stations running at all times
7. Have at least 200 to 250 preforms prior to the show start and possible not have to make preforms at the show
8. Have enough cabbing instructors for each cabbing machine while allowing for breaks to relax and enjoy the show
9. Refine the preform and cab process to improve the flow and maintain an enjoyable atmosphere for all

The group also formed some committee leadership positions:

Mechanics: Gary

Technical: Reed

Public: Karen

Chris, Karen, and Gary hold other positions in the club and at the show.

Continued on page 17



Shop and Show News

Continued from page 16

Gary has already begun working on Goal #6 (Have 4 to 6 cabbing stations running at all times). Some of the cabbing machines are 50+ years old, so it comes as no surprise that we've had breakdowns during previous shows. Gary has begun servicing and repairing the machines. The committee's goal is to make sure that all the machines have a make-over between now and March. He has spent much time on the phone talking to manufacturers and getting advice.

Having enough volunteers is always a challenge. Our plan to have 4-6 working stations at all times during the show means that this could get harder. Karen will be looking into how we can recruit and train volunteers more effectively.

Reed, the designer of this year's much lauded new queue system has a very strong background in setting up show equipment and programming the technical aspects for the shop. He will manage and possibly improve it in 2019.

You'll be hearing more in the coming months. Once again, anyone interested in helping out with the shop or show can see one of us or the club officers, or email the Board.

—Lapidary Shop Committee

Article of Interest

Dave Fryauff

Minerology on Mars points to a cold and icy ancient climate:

<https://www.sciencedaily.com/releases/2018/06/180608003155.htm>

The climate throughout Mars' early history has long been debated—was the Red Planet warm and wet, or cold and icy? New research published in *Icarus* provides evidence for the latter.



2018-2019 Membership Payments

Doug Baum

Hope you are enjoying your summer.

I am starting to collect payments for 2018-2019.
If you paid in June, you are good for next year.

2018-2019 Membership Payments:

\$20 for family and \$15 for single

Check made out to GLMSMC or cash mail to:

Doug Baum
11205 Golden Meadow Court
Germantown, MD 20876

Send a self-addressed stamped envelope and I will mail your NEW Membership cards.

If you would like a magnetic backed name tag, send an additional \$7 for each tag with the name you would like on each badge.

Questions: email me at dbaum18@aol.com

Check the roster and make sure names, contact information, and all other information is correct. If not, let me know and I will change it.



Upcoming Shows

1st Annual South Jersey Gem, Jewelry, Mineral & Fossil Show

Date: October 13 – 14, 2018

Location: 1721 Springdale Road, Cherry Hill, NJ 08054

Show Times: Saturday (10am-6pm) & Sunday (10am-5pm)

Website: www.sjmineralshow.com

Facebook: www.facebook.com/sjmineralshow

If you are planning a trip and want to know what clubs you might be able to visit, it would be worthwhile to visit the American Federation of Mineralogical Societies website. Check out their newsletter archives at <http://www.amfed.org/news/default.htm>.





BOARD OF DIRECTORS

President – Ken Reynolds

Vice President – Steven Calamuci

Secretary – Karen Lottes

Treasurer – Holly McNeil

Field Trip Chairman – Dave Fryauff

Membership Chairman – Doug Baum

Downstairs Showchair – Chris Luzier

Upstairs Showchair – Dave Tiktinsky

Property Manager – Joel Rosen

Immediate Past President – Jonathan Harris

EFMLS Liaison – Wendell Mohr

Bulletin Editor– Olivia Luzier

Life Members: Larry Harrison, Wendell Mohr, Juan Proaño, and George Durland

Society Address: Gem, Lapidary, and Mineral Society of Montgomery County MD., Inc.

P. O. Box 444, Gaithersburg MD 20884-0444

Website: <http://www.glmsmc.com/>

All Society correspondence is to be sent to this address except that which is intended for The Rockhounder and its editor. Such items are to be sent to the editor's email address at editor@glmsmc.com.

Permission to copy material printed herein, except specifically copyrighted items, is granted, provided credit is given.

Award Winning Bulletin
EFMLS, AFMS



**TIME SENSITIVE
DATED MATERIAL
FIRST CLASS MAIL**

**The Rockhounder
Gem, Lapidary, and Mineral Society
of Montgomery County, MD, Inc.
P. O. Box 444, Gaithersburg MD
20884-0444**